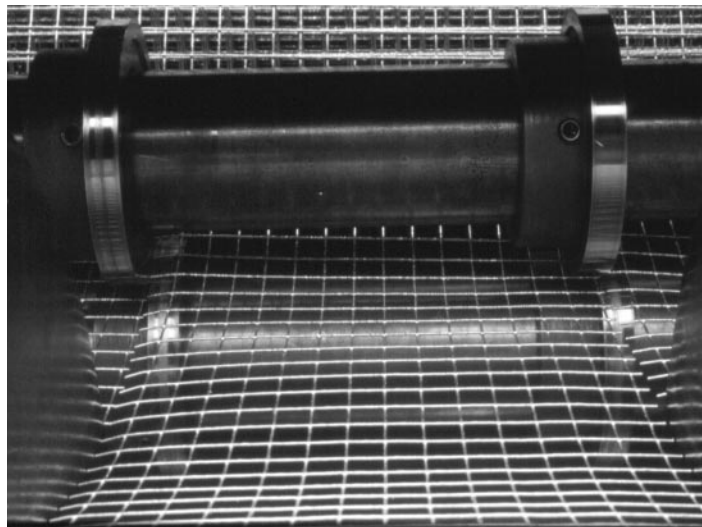


## GALVANIZED HARDWARE CLOTH

Galvanized Hardware Cloth is used for many industrial and commercial screening applications and is one of the most economical means of resisting rust and corrosion.

Applications include screens for vents, louvers, spark arrestors, finger guards, baskets, racks, trays, cages, dehydrators and miscellaneous sheet metal fabrications.

*Looking for Something Heavier???*  
*Please Call Us for Current Inventory*



MESH	ASWG GAUGE	WIDTH INCHES	APPROX. WT. PER ROLL
2 x 2	19	18	38
	.041"	24	50
1/2" x 1/2"		30	63
		36	75
		48	100
		60	125
		72	150
4 x 4	23	24	49
	.025"	30	61
1/4" x 1/4"		36	73
		48	98
5 x 5	24	36	60
	.023"	48	80
7 x 7	27	48	55
	.017"		
8 x 8	27	24	41
	.017"	30	51
1/8" x 1/8"		36	61
		48	82



<b>AVIARY NETTING</b> (GALVANIZED AFTER WEAVING) 100 Foot Rolls		
MESH/GAUGE	WIDTH	WT. PER ROLL
1/2" – 22 GA	24"	24#
	36"	36#
	48"	48#
	72"	72#

<b>STAINLESS STEEL                      HEX NETTING</b> (ALSO MONEL)		
MESH	WIRE	ROLL SIZE
1"	22 GA (.028)	48" x 150'
1"	20 GA (.035)	48" x 150'
2"	18 GA (.047)	48" x 150'

<b>POULTRY NETTING</b> (GALVANIZED BEFORE WEAVING) 150 Foot Rolls		
MESH/GAUGE	WIDTH	WT. PER ROLL
1" – 20 GA	12"	16#
	24"	32#
	* 36"	46#
	* 48"	62#
	* 60"	77#
	* 72"	92#
	2" – 20 GA	12"
24"		16#
36"		23#
48"		31#
60"		38#
72"	46#	

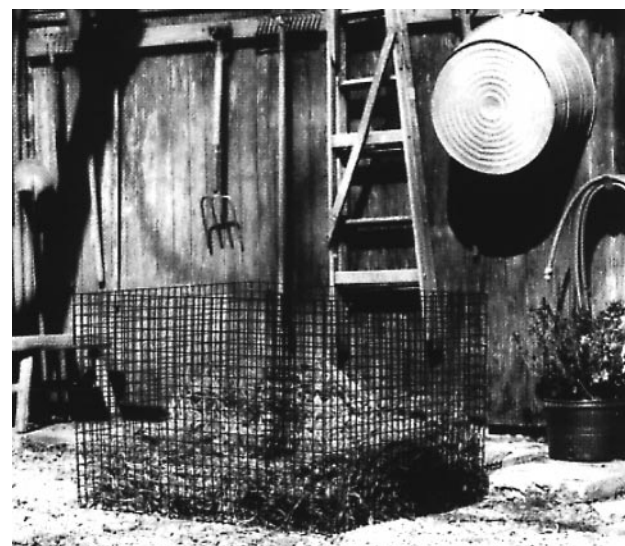
\* Also available black PVC coated

<b>COPPER ROOT BARRIER SCREEN</b> Repairing sidewalks and other pavements damaged by tree roots is a major cost. Studies have shown that by digging a trench along the sidewalk edge nearest a tree and installing a 16 mesh .011" wire diameter Copper Wire Mesh, roots which regenerate get blocked. This material is always in stock at our Hayward, California facility.
---

<b>WELDED WIRE MESH PANELS</b>				
MATERIAL	SHEET SIZE	MESH SIZE	GAUGE	WEIGHT
Plain Steel	48" x 120"	1" Centers	.192"	96#
	48" x 120"	1" Centers	.2437"	165#
	60" x 120"	2" Centers	.128"	25#
	48" x 120"	2" Centers	.192"	49#
	48" x 120"	2" Centers	.2437"	49#
	48" x 120"	2" Opening	.2437"	72#
	48" x 120"	3" Centers	.2437"	54#
	48" x 144"	3" Centers	.2437"	65#
	48" x 144"	4" Centers	.2437"	48#
	48" x 144"	4" Centers	.2437"	60#
Galvanized After	60" x 120"	2" Centers	.128"	29#
	60" x 192"	2 x 4 Centers	.192"	82#
Stainless Steel	48" x 120"	1" Centers	.120"	38#
	48" x 120"	2" Centers	.148"	25#

<b>INSECT SCREEN</b> 100 Foot Rolls				
MESH	WIRE/THREAD	WIDTH	WT. PER SQ.FT.	
Aluminum	18 x 16	.011	24" - 72"	.05 #
Fiberglass	18 x 16	.011	24" - 72"	.035#
Solar Screen	54 x 18	.011	24" - 72"	.055#
Galvanized	18 x 14	.009	36" & 48"	.09#
Bright Bronze	18 x 14	.011	36" & 48"	.146#
Copper	16 x 16	.011	36" & 48"	.146#
Plain Steel	18 x 14	.009	36" & 48"	.09#
Stainless Steel	18 x 14	.009	36" & 48"	.09#

<b>FIREPLACE SCREEN</b> 8 mesh .020" Black painted steel, available in stock width of 36" and 48". Also available in other widths in Mill run quantities. Has wide use as a speaker grill for decorative purposes as well.
---



*Residential Composter made of 12 gauge wire, galvanized and PVC coated.*